



The RDA-02 is a versatile high performance Audio Distribution Amplifier, featuring four identical mono distribution amplifiers, each provided with five balanced low impedance outputs and one unbalanced output.

The RDA-02 is provided with high impedance differential balanced line level inputs on a DB9 female connector and unbalanced Hi-Fi Level 300 mV inputs on RCA connectors. Outputs are provided on two DB 25 male connectors.

Each individual input is selectable by internal switch to be balanced or unbalanced making the RDA-02 usable as a balancing amplifier.

An internal input to output matrix together with mono summing amplifiers makes the RDA-02 a highly versatile unit allowing several modes of operation (See Block Diagram for combinations).

Possible operation are: 4 x independent Mono Audio DA's; 2 x Stereo DA's; 1x Stereo DA with 1 x Mono DA fed from summed Stereo Input, plus 1 x Spare Mono DA

As supplied from Elan Audio the RDA-02 is linked as 4 x independent Mono or 2 x Stereo DA's with gain set to unity.

The gain of each amplifier stage is adjustable from the front panel, + and – 10 dB from unity. The Gain Control Potentiometers have 18 tooth splined shafts and may be moved forward on the PCB to accept standard Splined Control Knobs

A Yellow and Red Indicator LED is provided for each output amplifier. The yellow LED indicates audio present at about – 24 dBu or above. The red LED is set to flash at + 14 dBu warning of potential overload of external systems connected to the RDA-02. The RDA-02 is capable of handling audio levels up to + 26 dBu.

The RDA-02 is a self-contained device; AC mains powered, rack mount and occupies 1RU of rack space.

APPLICATIONS

- Audio Distribution
- Stereo to Mono Conversion
- Balancing Amplifier

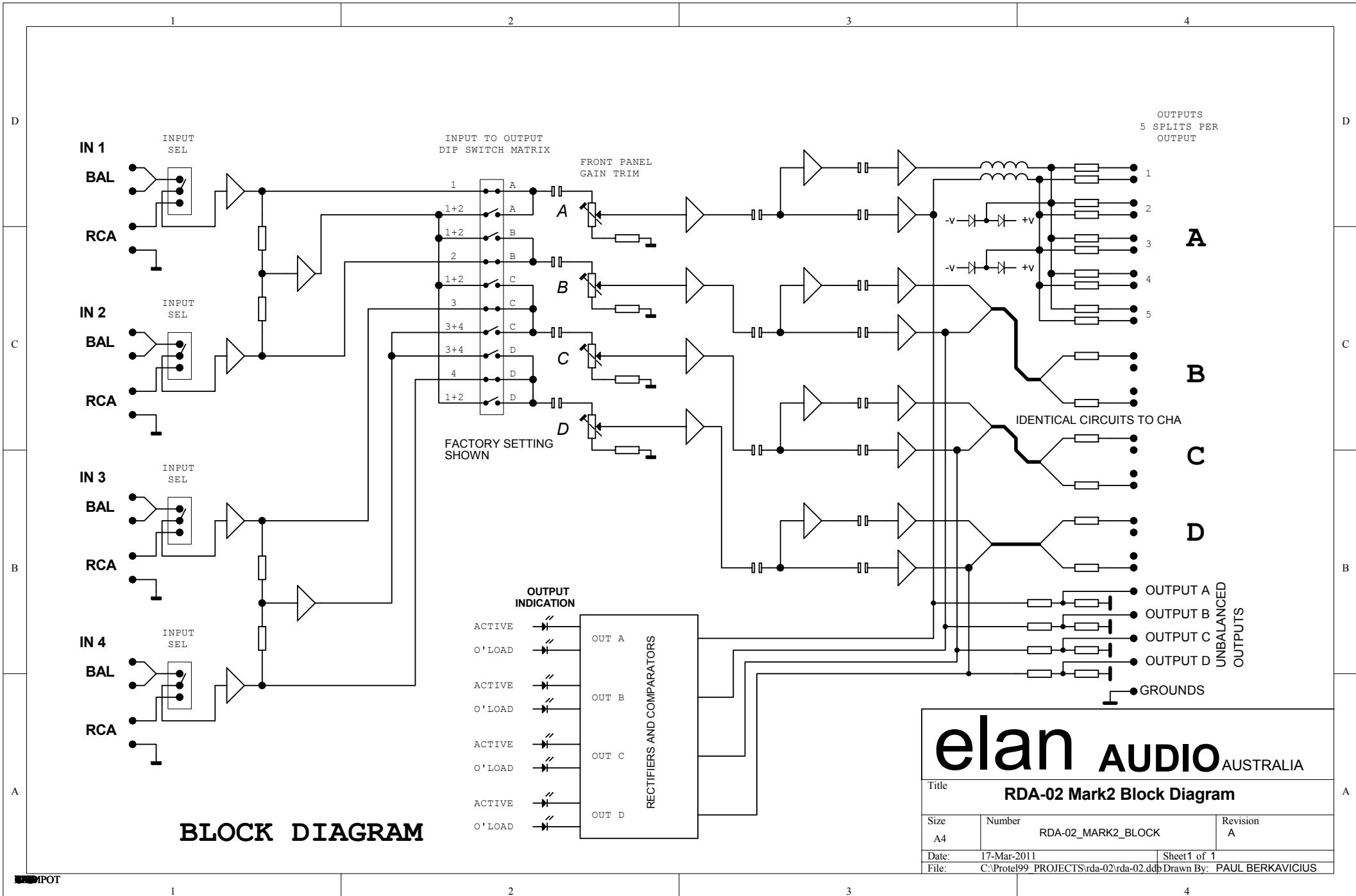
FEATURES

- 4 x Mono or 2 x Stereo Audio DA's each with 5 Balanced Outputs and 1 Unbalanced output
- Selectable Balanced and Unbalanced Inputs
- Versatile Selectable Input to Output Matrix
- Front Panel Adjustable Gain Controls + and – 10 dB Range
- Audio Presence and Overload Indicators
- + 26 dBu Audio Level Capability

TECHNICAL SPECIFICATIONS

Inputs	DB 9 Female: Balanced, Line Level, High Impedance RCA: Unbalanced, 300 mV, High Impedance
Sensitivity	Adjustable Balanced + and – 10 dB from Unity
Outputs	2x DB 25 Male: Balanced, Low Impedance 50 Ohms Unbalanced, -10dBu
Max Output Level	+ 26 dBm into 600 Ohms
Frequency Response	+ 0 – 1 dB 10 Hz to 45 KHz
Distortion	+ 20 dBm Out, less than 0.01%
S/N Ratio	94 dB WRT +14 dBu. 20 Hz to 20 KHz
Channel Separation	85 dB or Better
Power Supply	210 V to 260 V AC 50 to 60 Hz
Power Consumption	Approximately 20 VA
Construction	1 RU Rack Mount, all Aluminium chassis and front panel construction.
Dimensions	W 485 mm x H 45 mm x 290 mm
Weight	2.2 Kg Unpacked
Weight	3 Kg Packed for Shipping





BLOCK DIAGRAM

elan AUDIO AUSTRALIA		
Title RDA-02 Mark2 Block Diagram		
Size A4	Number RDA-02_MARK2_BLOCK	Revision A
Date: 17-Mar-2011	Sheet 1 of 1	
File: C:\Protel99 PROJECTS\rda-02\rda-02.ddb Drawn By: PAUL BERKAVICIUS		

RDA - 02 Mk2 FRONT & BACK PANEL

