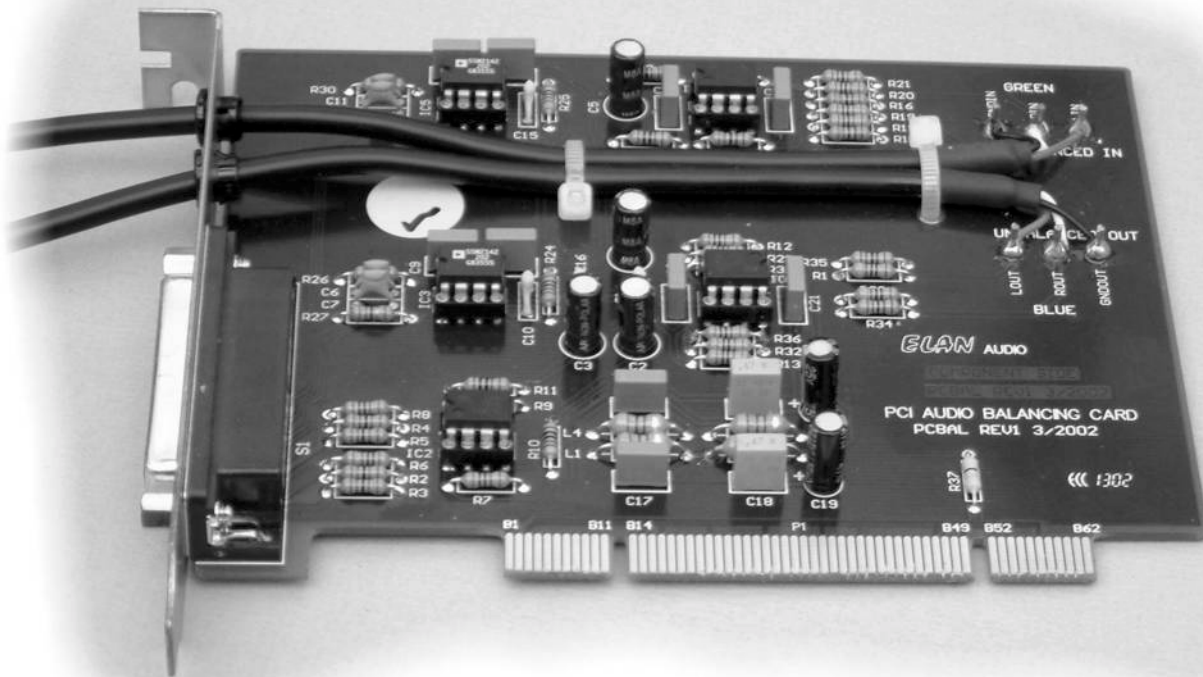


ELAN Audio

PC-BAL

PCI Format Line Balancing Board for PC Sound Cards



The PC-BAL is a Plug In Board for Personal Computers designed as a quality Stereo Interface between balanced +4 dBu standard broadcast line level systems and ordinary Computer Sound Cards. The majority of the current generation inexpensive Computer Sound Cards are actually very good, and are capable of giving High Quality Audio performance justifying their use in Professional Broadcast Systems. Unfortunately, proper audio grounding techniques are rarely if ever applied in the design and circuit board layout of Personal Computers making it impossible to realise the full performance of ordinary Sound Cards without special interfacing

The main problems are Hum Loops and Ground Induced Noise for which the PC-BAL Board is designed to overcome. The PC-BAL Board is designed to fit into a normal PCI slot, and takes its + and - 12V DC Supply and Ground from the PC

The Stereo Balanced Line Inputs and Outputs are via a Female DB25 Connector with Audio Levels being standard +4 dBu

The Stereo Unbalanced Line Inputs and Outputs are via "Flying Leads" fitted with 3.5mm Stereo Jacks intended to plug directly into the Sound Card, Audio Levels are the standard 300 mV Hi-Fi levels compatible with normal Sound Cards

Technical Performance

Audio performance of the PC-BAL Board is considerable better than any ordinary Sound Card, with overall performance entirely dependent on the quality of the Sound Card

Performance attained from a Soundblaster Live PCI Sound Card, Linear 48 KHz Sampling

Signal to Noise Ratio:	20 Hz to 20 KHz	All Muted	89.3 dB
		Stopped	60.7 dB
		Playing Silence	60.6 dB
Frequency Response:	+0 -1 dB	Rec/Play	10 Hz to 21.3 KHz
Distortion:	at 1 KHz		0.06% (THD)

Manufactured in Western Australia by

Elan Audio 2 Steel Court
Phone 08 9277 3500

South Guildford WA 6055
Fax 08 9478 2266

www.elan.com.au
email sales@elan.com.au